



**The Mythical Institution - an outlook**  
*Exhibition Manual*

## Preface

### Institution

History

Profile

an outlook

Curation

### Venue

Map

Exterior

Arcs

Gallery

Library

Yard

Greenhouse

Pond

Kitchen

Canteen

Terrace

Tomb

Ruins

### Exhibition

Room 1

Room 2

Room 3

Textworks

Paintings

Bursary

Behaviour

Form

Notes

## Preface

This document specifically serves to support the exhibition-making of upcoming exhibitions hosted at the [\*Mythical Institution - an outlook\*](#). The structure of this supportive document can be found on the left side of this spread and will be explained in the following. The first part provides information about the beliefs and general philosophy of the Mythical Institution's core programme and the importance of its outlet. The second part of this document aims to provide knowledge about the venue's facilities, and how exhibited works can have a meaningful impact when situated in specific spatial relations. The third part gives vital insight about the measurements of exhibition rooms and the practicalities of upcoming exhibitions. Invited artists are kindly asked to vigilantly read through this document and understand its

contents. The last two pages feature a questionnaire, which is expected to be returned to the responsible curator.

We would like to thank everyone involved in the endeavour of advancing a contemporary art discourse and particularly everyone who is involved in the curating and art-making process.

## Institution

## History

## Profile

As one of the world's most renowned art institutions, the Mythical Institution was founded many years ago as an attempt to house an exclusive selection of today's most promising emerging artists. Located on a beautiful 200 acre estate formerly owned by the actor Fred Astaire, the Mythical institution prides itself on diversity and strives to accept exceptional artists from a wide range of artistic backgrounds. The Mythical Institution aims to provide the most intensive educational programme for its participants in order to challenge the prevalent landscape of contemporary art practices. The duration of the Institution's programme comprises an intensive and well-funded year with the possibility for extension.

More information can be found on the website:  
<https://mythical-institution.org/>

## Institution

## an outlook

## Curation

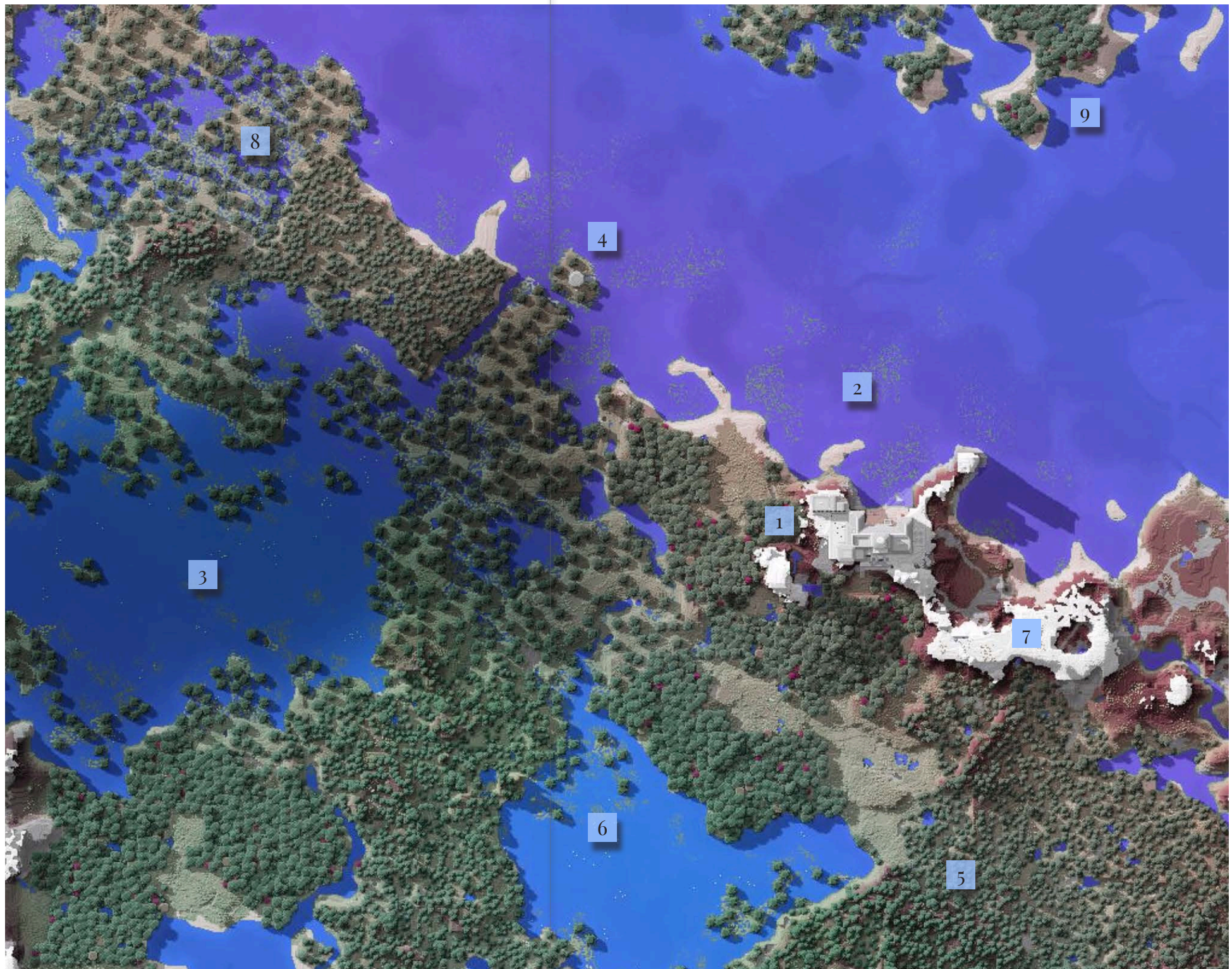
The [Mythical Institution - an outlook](#) is the newest outlet of contemporary art practice affiliated with the idiosyncratic beliefs of the Mythical Institution. Hosting exhibitions featuring international artists the [Mythical Institution - an outlook](#) provides a space for emergent and established practices. Through ambitious curation the [Mythical Institution - an outlook](#) serves to strengthen the already impressive influence the Mythical Institution has in establishing international art precedents and has proven time and again how it subjects art-making to critical scrutiny. An exposé of an outlook's facilities can be found on the following pages. Participating artists are expected to understand its implications.

For urgent queries, please message:  
[office@mythical-institution.org](mailto:office@mythical-institution.org)

## Venue

## Map

- 1 *an outlook*
- 2 *Great Bay*
- 3 *Ancient Swamplands*
- 4 *Tomb of Janet Leigh*
- 5 *Southern Reaches*
- 6 *Marie Therese Memorial Lake*
- 7 *Academy Plateau*
- 8 *Mythical Wetlands*
- 9 *Outer Continent*



## Venue

## Exterior

The adamant walls of the [Mythical Institution - an outlook](#) rise above a dramatic coastal panorama. The steep cliffs contrast the serene bay area harbouring a small off-shore peninsula. Resting atop the mountain plateau, an outlook gazes upon vast woodlands to the south and an ancient swamp in the northwest. an outlook may be entered through the south gate after ascending an antique, yet

reliable staircase that directly leads to the southernmost access plate. The venue is nestled within an even higher mountain range to both east and west. This truly unique setting is only paralleled by the quality of work that is given the chance to be exhibited here.

*Wind Blowing from Paradise: The Mythical Institution - an outlook thrones upon the steep shores of history's reigns.*



*Accessibility: Facing south, the surrounding environment is characterised by dark oak trees and lush woodland.*



## Venue

## Arcs

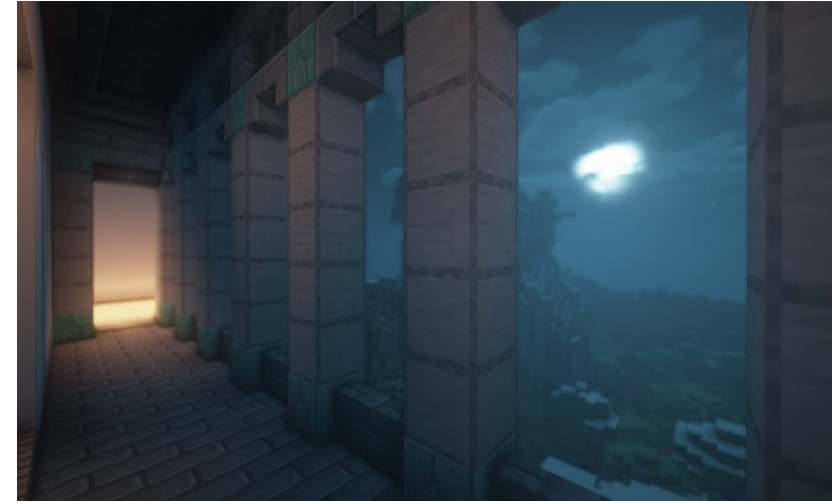
The historic building dates back multiple centuries and is believed to be of aristocratic origin. Rumours claim that it has served as the summer residence of royalty, and had been passed down for generations until it was donated to the Mythical Institution. The estate is steeped in history; its rich legacy does not fail to disseminate the importance of pristine values. To this very day its archways radiate an

aura of grace and beauty. Artists and visitors alike value the form and function of its unique architecture.

*Sea-Gazing: The vast seascape can be beheld via an observation platform. Among artists it is also described as a hallowed smoking place.*



*Silent Honour Arc: Numerous mythical outside areas allow for fateful encounters.*



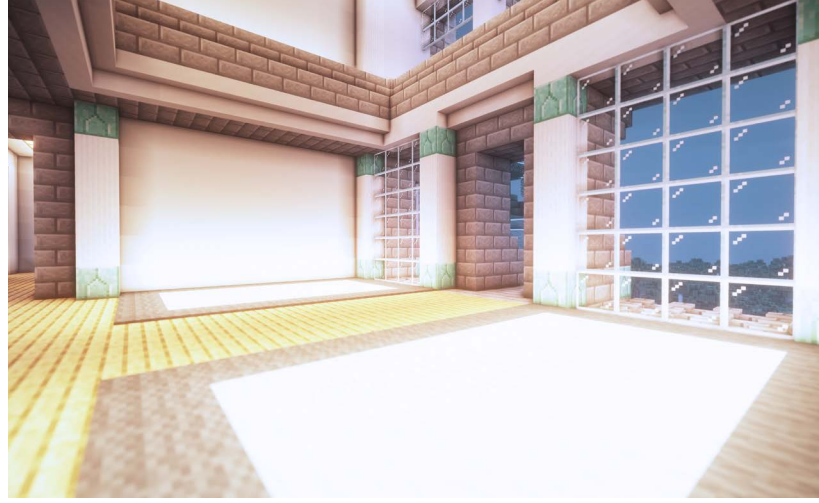
## Venue

## Gallery

The southern entrance of the [\*Mythical Institution - an out-look\*](#) leads to the spacious foyer area. The northern balcony archway, from which you can see the bay area, can be entered directly from here. The Foyer connects to both south and east wing of the estate. The concierge's room, kitchen, canteen and terrace area can be found in the east wing, whereas the library and yard area can be found to the

western side. Both wings offer access to the upper floor via staircases to the north side of each hallway. One can find the designated exhibition spaces here as well as the upper gallery area. Each room is well lit and ensures a great amount of both natural and artificial light.

*Champagne Reception: Point of departure and place to return to. It features numerous empty wall spaces.*



*Superb Conditions: The two-level foyer contains a gallery, which includes 3 separate balconies overlooking the southern reaches.*



## Venue

## Library

## Yard

The library of the Mythical Institution features an impressive selection of publications aligned with its idiosyncratic beliefs and approach to contemporary art practices. The collection of monographs of relevant contemporary artists is supplemented by a press archive, containing catalogues of participants, alumni and instructors. The library and online catalogue is accessible for participants and

staff only. Descending this multi-level space leads to the yard area, a tranquil public green space located on the westernmost gauntlet of the mountain plateau. The adequately-temperated greenhouse can be found right at the cliff to the northern side of the yard.

*Forbidden Scrolls: The library is said to harbour ancient scrolls of immeasurable value. Alas, the archive has been sealed off long ago.*



*Nature after Nature: The yard can be viewed at from multiple windows in the library area and western corridor.*



## Venue

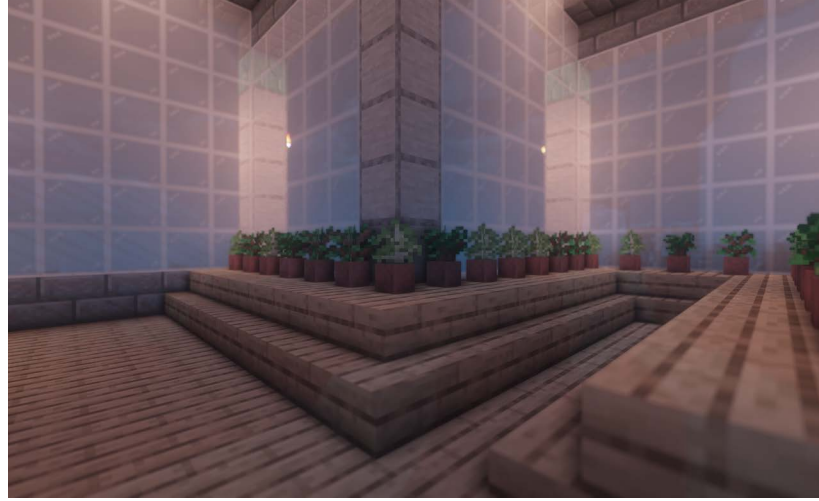
## Greenhouse

## Pond

The *Mythical Institution - an outlook* prides itself on the preservation of native wildlife. A serious endeavour is made to ensure an unscathed environment for generations of artists to come. For this particular reason, the venue features a greenhouse that raises sapplings of native trees and shrubs. The indoor pond section of the greenhouse in turn aims to investigate water quality and practical uses

of natural sediment for experimental material use. The clay-like sediment that has been found in the adjacent bay area was proven to be of exceptional malleability for sculptural works and is currently euphorically processed in a myriad of ways.

*(Bio-) Diversity: The sappling farm comprises a selection of oak, pine, acacia and birch specimens.*



*Clear Waters: The indoor pond has been carefully modeled after its natural counterpart in the bay area. Swimming in the pond is prohibited.*



## Venue

## Kitchen

## Canteen

## Terrace

The open kitchen is located in the east wing of the venue. Deploying a wholesome concept, the philosophy of the kitchen aims to supply artists with nutrition that pays regard to seasonal and regional ingredients. The kitchen staff frequently provides instructor-led cooking courses, with the hope that artists would not proceed to dissipate scholarship money through consistent outside

dining and/or delivery food services. The Canteen offers a fitting habitat for consuming meals and is inviting to artists and visitors with its generous windows and elaborate columns. It connects to a terrace that can be used for connecting to others artists, connecting to curators and/or connecting to nature.

*Artisanal Goods: The Mythical Institution condemns the excessive use of plastic and hence neither offers plastic cutlery nor straws.*



*A Brief Encounter: While it is allowed to smoke on the terrace, please note that you may not do so inside.*



## Venue

## Tomb

It has recently been reported that the tomb of Janet Leigh was discovered in the ancient swamplands northwest of the [Mythical Institution - an outlook](#). The former Hollywood actress rose to fame after she had been scouted working at a ski resort in the Winter of 1945 - 1946. She achieved her most lasting recognition as the doomed Marion Crane in Alfred Hitchcock's Psycho (1960), which earned her a

Golden Globe Award for Best Supporting Actress and an Academy Award nomination for Best Supporting Actress. A synopsis of Janet Leigh's life can be found scattered within the tomb's vicinity. Exhibiting artists may visit at their own discretion by land or boat.

Former Glory: If you wish to visit the tomb by boat, make sure to state the need for such boat in the material bursary.



Serene Grace: The place where Janet Leigh finds eternal rest. Her filmic credentials may be reminisced about in a condolence book.



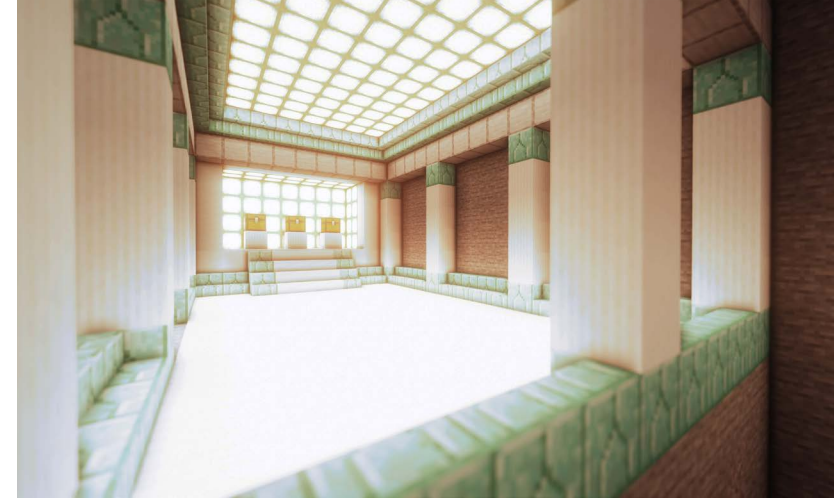
## Venue

## Ruins

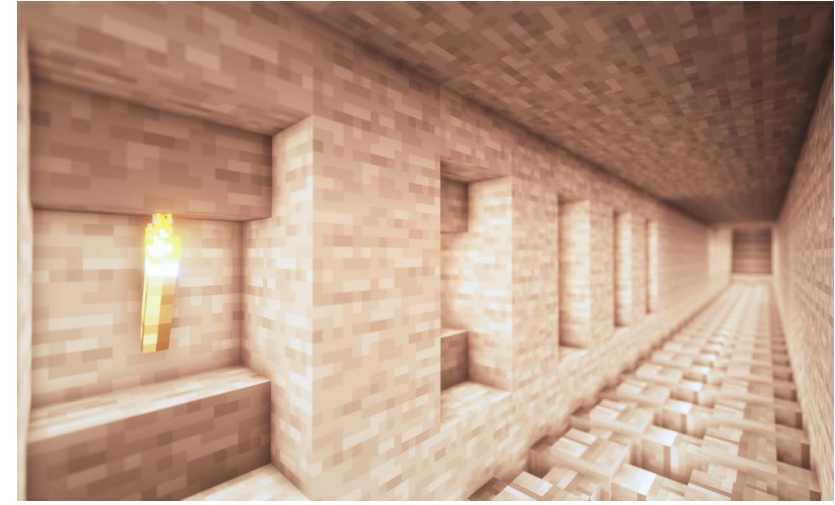
According to legend, the walls of the [Mythical Institution - an outlook](#) are host to a plethora of secrets. Since the venue enumerates a long and impressive history spanning multiple centuries, the architecture is expected to run much deeper than one might initially expect. It is said that antique recordings documenting secret passages and locations of ancient architecture are still in possession of

the venue's private library. However, none of these documents seem to be exhibited in its public chambers. If the rumours hold true and such documents do exist, they are most certainly kept in a sealed archive.

Ruins of Civilisation: The Mythical Institution is required to let exhibiting artists know that integrity and equal opportunities are fundamental values.



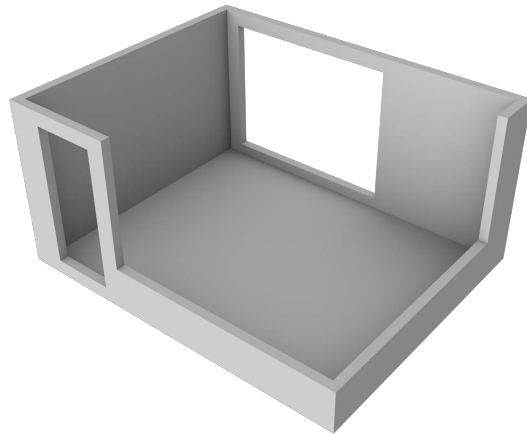
Ancient Waterway: Due to a thorough modernisation process, the venue's former waterways are out of use and have been since abandoned.



## Exhibition

### Room 1

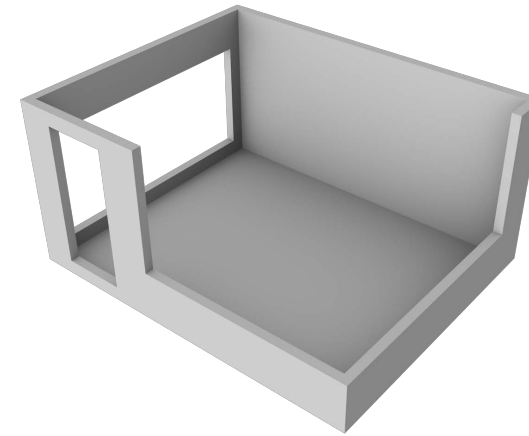
Room 1 is located on the upper floor of the eastern wing. It is the biggest of the three spaces and consists of 15 x 12 units. It features a generous window to the left side and a glass ceiling. The lighting of the room is complemented by a ring of artificial light to ensure an optimum of exposure. The floor is composed of a light gray mesh fabric. Room 1 is suited for any kind of work with the exception of that which needs to be hung.



## Exhibition

### Room 2

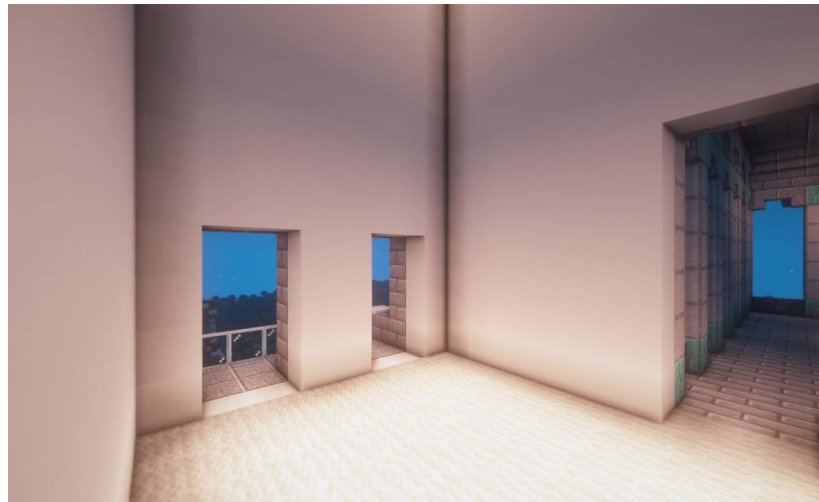
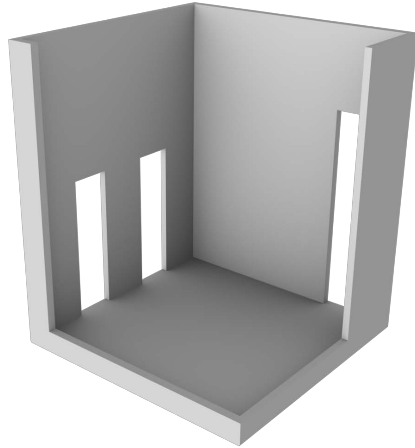
Room 2 is located on the upper floor of the western wing. It does not require an excessive amount of space. It is the second most spacious of the three spaces and consists of 14 x 9 units. It features a ribbon window pointing towards the gallery space. The floor is composed of a light gray mesh fabric. The space is accordingly lit by a mix of natural and artificial light. It is very bright and can be seen from the gallery space. Room 2 is suitable for work that



## Exhibition

### Room 3

Room 3 is located in the tower that is accessible from the outside of the upper floor in the eastern wing. It is the highest of the three spaces and consists of 9 x 9 units. It contains a large balcony that overlooks the mountain range to the west. The lighting of the room is complemented by a ring of artificial light to ensure perfect exhibition conditions. The floor is composed of a light gray mesh fabric. Room



3 is mostly suited for work that can be hung from walls. Due to the exceptional height of room 3, exhibition concepts may want to incorporate the whole measurements of this space.

## Exhibition

### Textworks

### Paintings

Additional spaces that are not specifically designated as exhibition spaces may still be taken into consideration for exhibition. The walls of the foyer and gallery are exceptionally suited for installing paintings and flat works. Additionally, the lecterns in the library may be used for displaying text-based artworks. Performances can be held throughout the building. Should it be adequate to

show a work outside the venue, it can be set up and exhibited in appropriate vicinity to the [Mythical Institution - an outlook](#).



## Exhibition

## Bursary

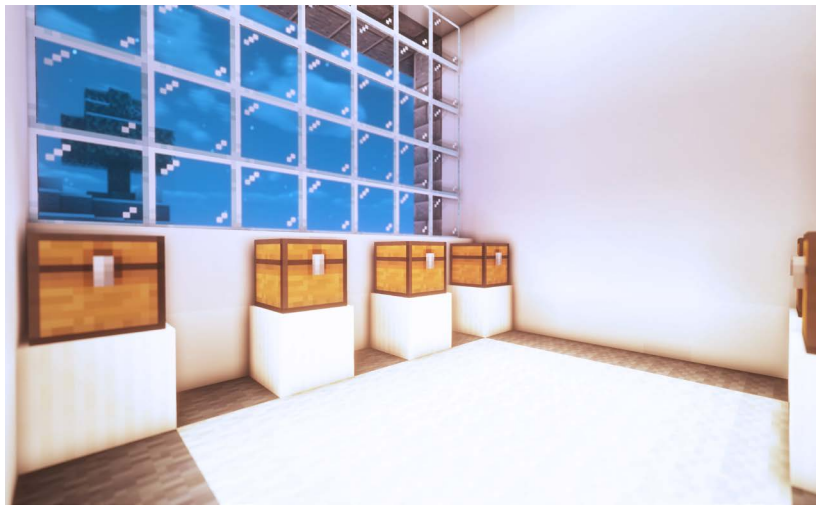
Exhibiting artists receive a bursary that may be used towards the acquisition of material expenses. In order to request material, please find the specific form on the last spread of this document. After your application has been approved, your personal material bursary can be found in a chest located directly beside the concierge's room. Each chest's ownership is indicated by a name plate.

Each chest may only be operated by its respective owner. It is prohibited to a) take material, b) displace material or c) destroy material that is not located in your respective chest. The participating artist is kindly asked to be considerate and to take responsibility for material that has been received.

*Gatekeeper's chamber: ... Hello? Is anybody there?*



*Treasure Trove: Chests will be filled accordingly prior to the setup phase.*



## Exhibition

## Behaviour

The Mythical Institution does not condone violence of any form. If exhibiting artists choose to act inappropriately, the Mythical Institution reserves the right to impose sanctions that aim to de-escalate, such as: the immediate (temporary) expulsion of the offending artist, temporary material embargoes, timeouts, chat bans or mutes. An arbitrary decision will be of the Mythical Institution's own

discretion and is not to be questioned.

